



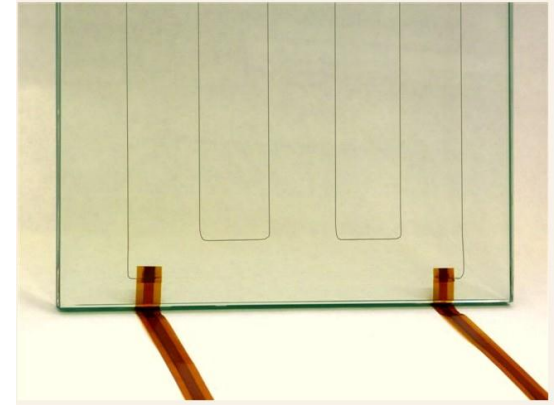
Alarm-Glass from Vetrotech Saint-Gobain Int. AG

24 October 2014

2 types of ALARM-Glasses are available!

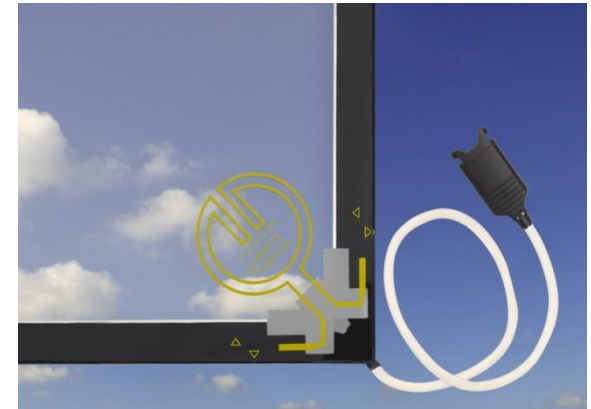
PROTECT with alarm wire

Wire loops (alarm wire) inserted between the glass and the interlayer set off an alarm if the wire is broken, due to the pane being damaged.



PROTECT with SECURIT® ALARM

An electrically conducting wire loop is burnt into the inside top corner of a SECURIT® pane. The loop is connected to the alarm system. If the glass is cracked, the wire is torn and an alarm is set off.



PROTECT with *alarm wire*

An electrically conducting silver wire is laid in meander fashion on the interlayer between two panes of a STADIP® PROTECT unit.

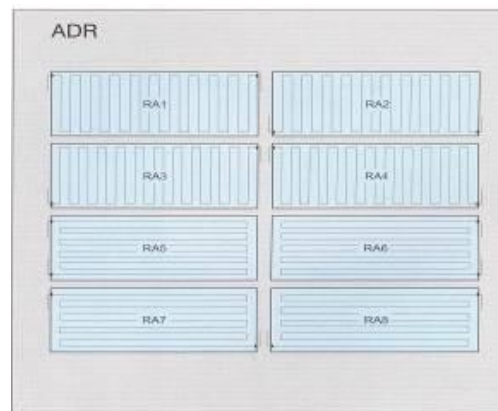
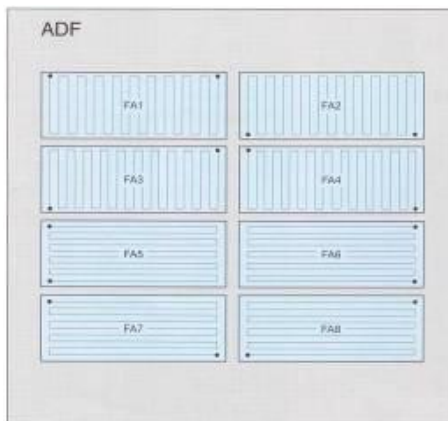
The connection resistance depends on the size of the pane.

The temperature induced resistance change is $0,004 \Omega/\text{Kelvin}$, which means, depending on application, the total pane resistance can fluctuate upwards and downwards by a maximum of 10% due to temperature variations!

➔ Silver wire can be replaced if needed! Check before ordering!!

The wire runs in parallel lines with a normal spacing of 35mm. However, other wire spacing are possible!

Connection is possible on the surface (ADF and on the edge (ADR)!



Wire insert

fine silver wire, 0,1 mm thick
resistance approx. $1,75 \Omega/\text{m}$
maximum current load 0,5 Amp.

PROTECT with **SECURIT® ALARM**

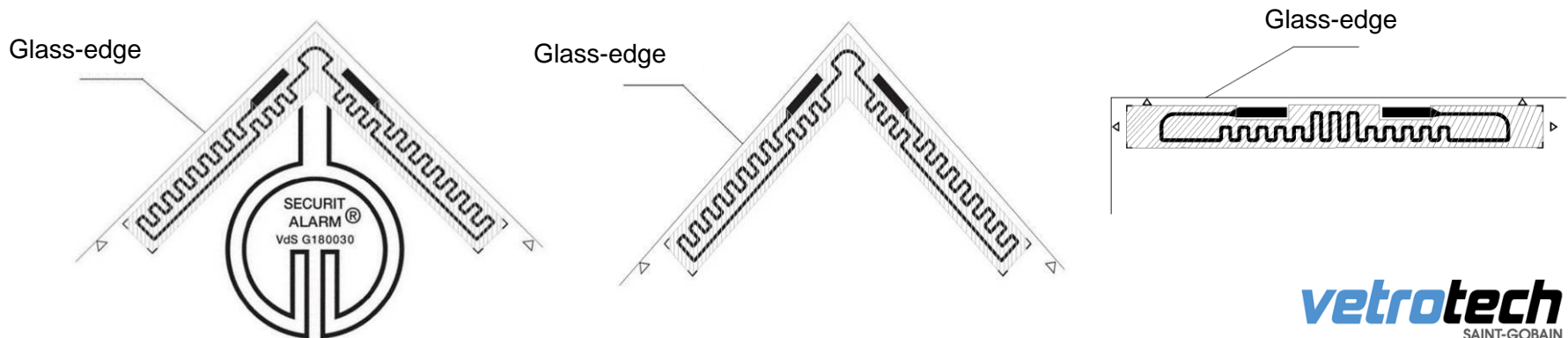
An electrically conducting wire loop is burnt into the inside top corner of a SECURIT® pane. The loop is connected to the alarm system. If the glass is cracked, the wire is torn and an alarm is set off.

The connection resistance of SECURIT® ALARM does not depend on the size of the pane. The loop resistance is between 3 and 12 ohm, according to the design, and is stated on the sticker affixed to the pane.

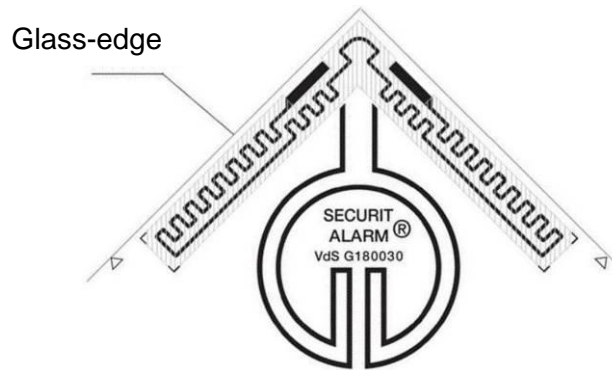
For the design of the alarm installation, this system has the advantage that each pane has roughly the same resistance, irrespective of the pane size. The maximum current load may not exceed 0,5 A.

Standard is a 6mm tempered glass (max. 2000x4000mm)

3 different designs available:



SECURIT® ALARM *ASR TYP VD*



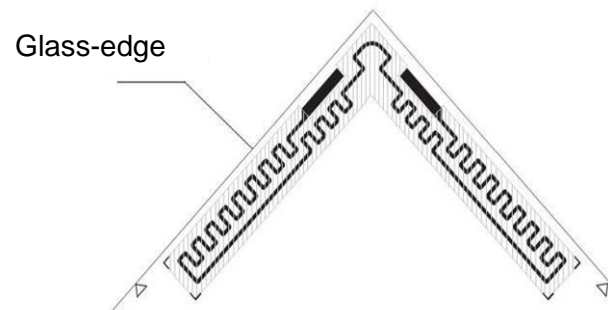
Version with „DUMMY“

The circle makes the alarm-system „visible“!

Available for IGU's and laminated glass!

Usually connected on the glasse edge.
(Surface-conection avilable on request!)

SECURIT® ALARM *ASR TYP V*



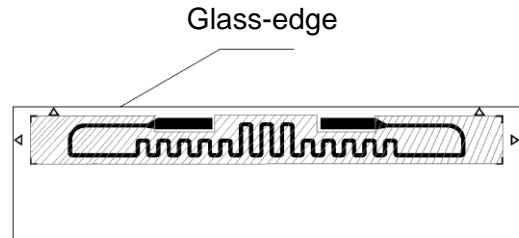
Version without „DUMMY“

Alarm-system is „invisible“! It will be hidden by the frame!

Available for IGU's and laminated glass!

Connected on the glasse edge.

SECURIT® ALARM *ASR TYP MV*



Version for shapes

Alarm-system is „invisible“! It will be hidden by the frame!

Available for IGU's and laminated glass!

Connected on the glasse edge.

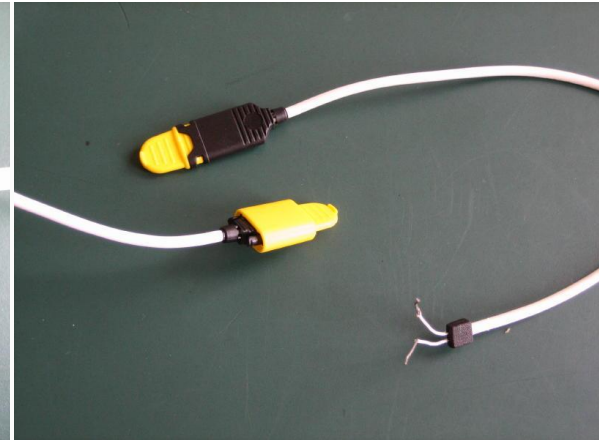
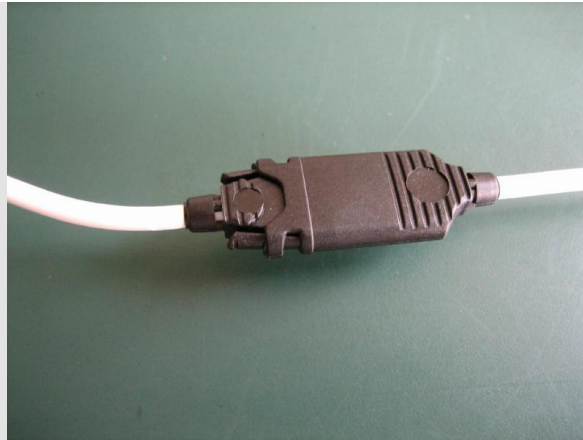
Minimum angle of the corner is 60° !

Cable-outcome

Alarm-wire: Flat-connector:



SECURIT® ALARM



Questions?

Many thanks for your attention!

Our ballistic testing laboratory - Porz (Cologne, Germany)

Cable-outcome

SECURIT® ALARM – details cable

